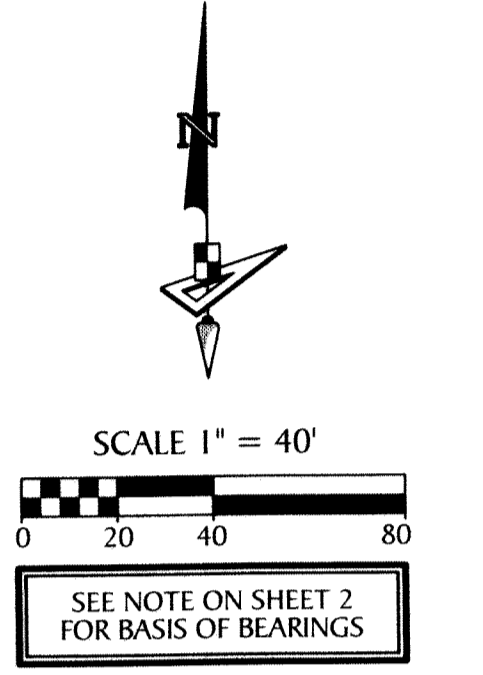


# GROVES OF WESTLAKE - PHASE I

BEING IN PART A REPLAT OF OPEN SPACE TRACT #4 AND OPEN SPACE TRACT #5, PERSIMMON BOULEVARD EAST - PLAT 2, PLAT BOOK 128, PAGES 16 THROUGH 19, INCLUSIVE, PUBLIC RECORDS OF PALM BEACH COUNTY, FLORIDA, AND BEING A PORTION OF SECTION 7, TOWNSHIP 43 SOUTH, RANGE 41 EAST AND SECTION 12, TOWNSHIP 43 SOUTH, RANGE 40 EAST, CITY OF WESTLAKE, PALM BEACH COUNTY, FLORIDA,

124

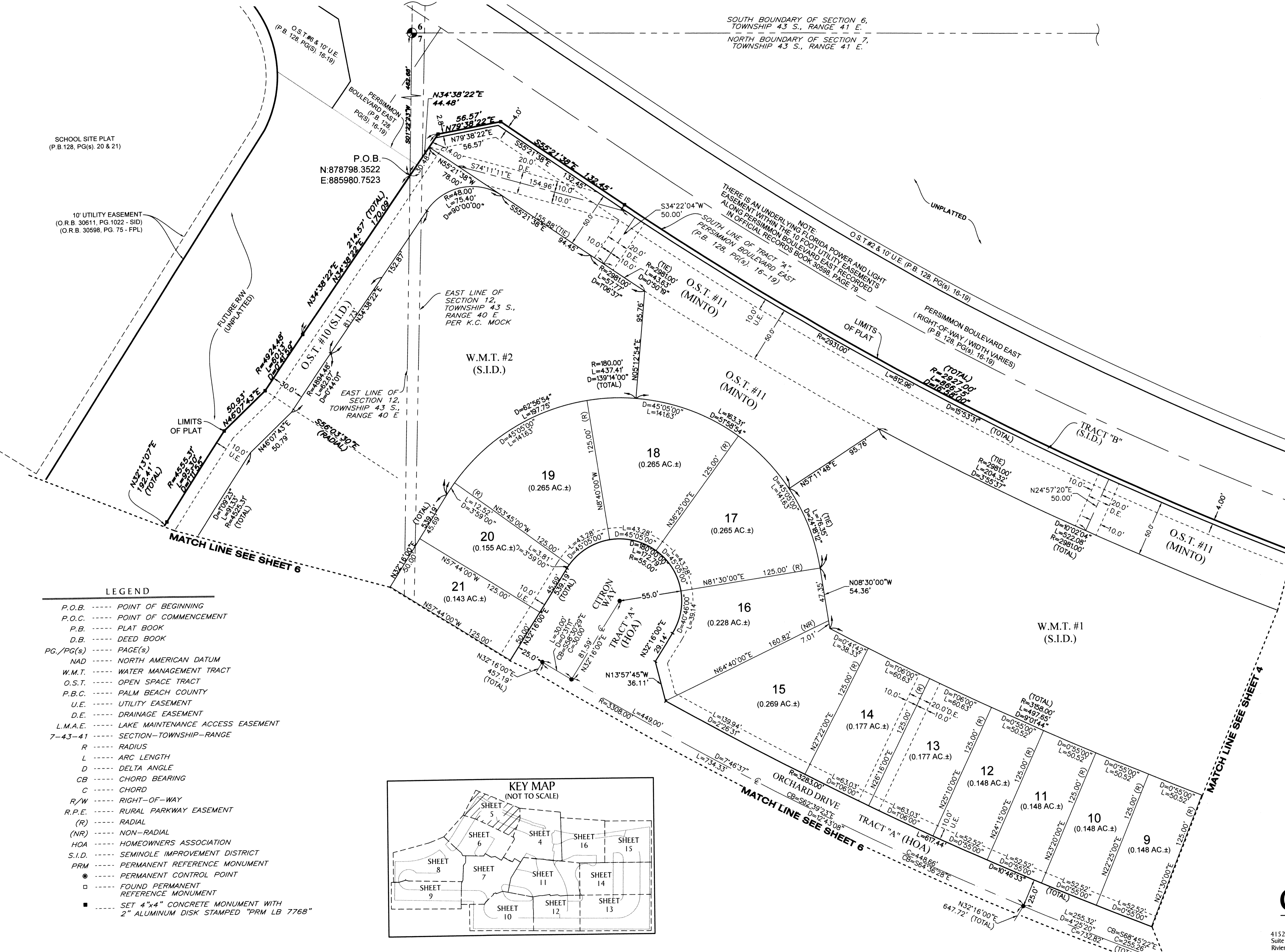


SCHOOL SITE PLAT  
(P.B. 128, PG(s). 20 & 21)

10' UTILITY EASEMENT  
(O.R.B. 30611, PG. 1022 - SID)  
(O.R.B. 30598, PG. 75 - FPL)

P.O.B.  
N:878798.3522  
E:885980.7523

SOUTH BOUNDARY OF SECTION 6,  
TOWNSHIP 43 S., RANGE 41 E.  
NORTH BOUNDARY OF SECTION 7,  
TOWNSHIP 43 S., RANGE 41 E.



- LEGEND**
- P.O.B. ----- POINT OF BEGINNING
  - P.O.C. ----- POINT OF COMMENCEMENT
  - P.B. ----- PLAT BOOK
  - D.B. ----- DEED BOOK
  - PG./PG(s) ----- PAGE(S)
  - NAD ----- NORTH AMERICAN DATUM
  - W.M.T. ----- WATER MANAGEMENT TRACT
  - O.S.T. ----- OPEN SPACE TRACT
  - P.B.C. ----- PALM BEACH COUNTY
  - U.E. ----- UTILITY EASEMENT
  - D.E. ----- DRAINAGE EASEMENT
  - L.M.A.E. ----- LAKE MAINTENANCE ACCESS EASEMENT
  - 7-43-41 ----- SECTION-TOWNSHIP-RANGE
  - R ----- RADIUS
  - L ----- ARC LENGTH
  - D ----- DELTA ANGLE
  - CB ----- CHORD BEARING
  - C ----- CHORD
  - R/W ----- RIGHT-OF-WAY
  - R.P.E. ----- RURAL PARKWAY EASEMENT
  - (R) ----- RADIAL
  - (NR) ----- NON-RADIAL
  - HOA ----- HOMEOWNERS ASSOCIATION
  - S.I.D. ----- SEMINOLE IMPROVEMENT DISTRICT
  - PRM ----- PERMANENT REFERENCE MONUMENT
  - ----- PERMANENT CONTROL POINT
  - ----- FOUND PERMANENT REFERENCE MONUMENT
  - ----- SET 4"x4" CONCRETE MONUMENT WITH 2" ALUMINUM DISK STAMPED "PRM LB 7768"

